



ROD AND TACKLE

Battenkill® Large Arbor

INTRODUCTION

The Battenkill Large Arbor Fly Reel combines the latest in fly-reel form with the Battenkill reel series' familiar functionality. The new Battenkill Large Arbor delivers a true large arbor design with all the features you have come to expect from an Orvis Battenkill:

- Ultra-large arbor spool picks up line faster than any other reel.
- Extremely lightweight design. The Battenkill Large Arbor weighs 3.8 oz. for the I, 4.75 oz. for the II, 5.25 oz. for the III, 6.35 oz. for the IV, 7.5 oz. for the V, and 9.8 oz. for the VI.
- Fully machined from bar-stock, aircraft-grade aluminum with a hard anodized finish for durability.
- An easily interchangeable spool.
- Fully adjustable 720-degree disc drag system based on the original Battenkill design.

SPOOL REMOVAL

The spool release is located in the middle of the reel spool. To remove, press the release latch to the side, at the same time lifting the spool out of the reel body.

COVER PLATE REMOVAL AND REFITTING

To remove the molded cover plate from the spool body, remove the spool, then the two retaining screws (Figure 1), then lift up on the end of the cover plate closest to the screws and slide it out. To refit the cover plate, ensure the retaining tabs (Figure 2) at the bottom of the plate are properly engaged in the body cutouts before sliding the plate in, then replace the retaining screws.

Note: It may be necessary to lightly pry on the cover to remove it from the assembly.

LEFT-HAND CONVERSION

All reels have the drag factory installed for right-hand retrieve, as indicated by the 'R' stamped in the clutch gear. To change your reel to left-hand retrieve, simply remove the cover plate (see Cover Plate Removal and Refitting), slide the ratchet gear **E** (Figure 3) off the center spindle, flip it over so the 'R' faces toward the frame, and slide the ratchet gear back down over the spindle. Replace the cover and screws. The reel is now set for left-hand retrieve.

DRAG OPERATION

The Battenkill Large Arbor Fly Reel features the familiar Battenkill disc drag system, which now incorporates composite-cork components, providing smooth, powerful stopping force sufficient for landing even the largest fish.

To adjust the drag, turn the drag knob clockwise to increase force and counter-clockwise to decrease it. The minimum drag setting should never be less than the pressure required to prevent overrunning of the line on fast runs.

The easy drag adjustment has detentes for maintaining drag position, and the infinitely adjustable knob (720 degrees of rotation) provides wide-ranging and controllable settings.

The drag assembly has been factory adjusted, but may require fine-tuning. During the breaking-in period, the composite-cork drag washers may compact slightly, requiring some adjustment. It may also become necessary to adjust the drag setting after continued use and wear of the drag components. If drag pressure is insufficient, the drag may be increased or decreased using the following procedure, as shown in Figure 3.

1. Turn drag adjustment knob to the minimum position.
2. Remove the two cover plate retaining screws and the cover plate. (See Cover Plate Removal and Refitting).
3. Remove screw **A**.
4. Remove drag retainer **B**.
5. To increase drag force, hold the adjustment knob in the minimum direction, and turn the drag adjustment nut **C** clockwise 1/2th turn, or until desired drag is acquired.
6. Replace retainer **B**, screw **A**, cover plate, and install spool.
7. Test the drag. If pressure is still insufficient, repeat the procedure until the desired pressure is achieved.

CLICK ADJUSTMENTS

The Battenkill Large Arbor is fitted with a new double-pawl clutch mechanism that provides a click in the line-in direction. The line-out click is provided by the composite click spring **D**, which can be disengaged to provide silent operation as follows:

1. Remove the two retaining screws and the cover plate. (See Cover Plate Removal and Refitting).
2. Lift the spring upwards until it clears the center gear.
3. Turn the spring over and replace into position. This will hold the spring out of contact with the clutch gear.

ROUTINE MAINTENANCE

Your new Orvis Battenkill Large Arbor reel has been properly lubricated prior to shipping. However, it should be cleaned and lubricated after extensive use or after contact with dirt, sand, or saltwater. Your reel should receive routine cleaning and maintenance at least twice each year. Lightly lubricate all moving components—handle, center spindle, and gear shaft with Penn reel lube, available in tackle shops. After lubrication, check screws for proper tightness. Do not put the reel away wet, or into a wet reel case or tackle box.

Following use in saltwater, the reel should be rinsed in fresh water and all parts, except drag surfaces, lightly oiled. The body and spool should be wiped with a lightly oiled cloth.

For extended storage, remove both line and backing and loosen the drag.

QUESTIONS?

If you have any questions about the operation and maintenance of your new reel, Orvis Technical Advisors are always available. Email: info@orvis.com. Phone: 1-800-778-4778.

GUARANTEE

Your Orvis Battenkill Large Arbor reel is unconditionally guaranteed against defects in materials and workmanship.

If you have any problems, simply send your reel and a \$10 check to the following address:

By USPS Mail: Orvis Reel Service; PO Box 798; Manchester, VT 05254.

By FedEx or UPS: Orvis Reel Service; Tennis Way, Rt. 7A; East Dorset, VT 05253.

If the reel is in any way defective in material or workmanship, your \$10 repair check will be returned to you at once.

Your reel will be completely serviced (cleaned, lubricated, and returned to you postpaid) for a fee of \$10, plus cost of parts.

Damaged reels can be repaired on an individual basis and repair work will be billed at the hourly shop rate, plus parts. We will provide a written estimate upon receipt of the reel prior to any work being done.



Figure 1



Figure 2

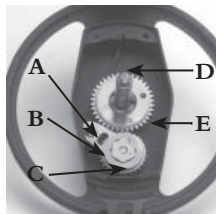
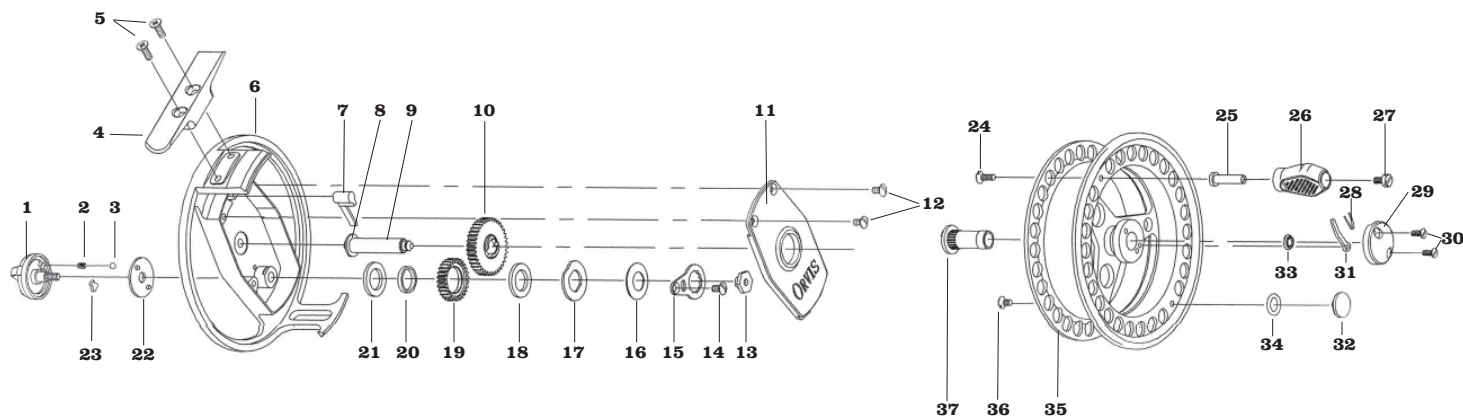


Figure 3



ROD AND TACKLE

Battenkill® Large Arbor



REEL ASSEMBLY

- | | | | |
|-------------------------|---------------------------------|--------------------------------|--------------------------------|
| 1 Drag Knob | 11 Cover Plate | 21 Drag Washer | 31 Quick-Release Lever |
| 2 Detent Spring | 12 Cover Plate Screws | 22 Detent Plate | 32 Counter Weight |
| 3 Detent Ball | 13 Drag Adjustment Nut | 23 Drag Knob Slider | 33 Oiler Pad |
| 4 Foot | 14 Retaining Plate Screw | 24 Knob Spindle Screw | 34 O-Ring |
| 5 Foot Screws | 15 Retaining Plate | 25 Knob Spindle | 35 Spool |
| 6 Body | 16 Spring Washer | 26 Handle Knob | 36 Counter Weight Screw |
| 7 Click Pawl | 17 Fixed Washer | 27 Handle Knob Screw | 37 Spool Bearing |
| 8 Spindle Washer | 18 Drag Washer | 28 Quick-Release Spring | |
| 9 Center Spindle | 19 Drag Gear | 29 Quick-Release Cover | |
| 10 Drive Gear | 20 Drag Gear Brush | 30 Quick-Release Screws | |

BATTENKILL LARGE ARBOR FLY REEL Capacity Chart

LINE WEIGHT	I	II	III	IV	V	VI
WF1	100					
WF2	75					
WF3	50	100				
WF4		75	100			
WF5		50	75			
WF6			50	125		
WF7				100	200*	
WF8				75	175*	
WF9					150*	225*
WF10						200*
WF11						175*

Battenkill Large Arbor Fly Reel Specifications

- | | |
|---|--|
| I Reel weight: 3.8 oz. 7.5 inches† | IV Reel weight: 6.35 oz. 11.5 inches† |
| II Reel weight: 4.75 oz. 10.5 inches† | V Reel weight: 7.5 oz. 12.5 inches† |
| III Reel weight: 5.25 oz. 11.0 inches† | VI Reel weight: 9.8 oz. 15 inches† |

†Line pickup in inches from one turn of the handle.

Capacity in Yards

Stated capacities are based on Orvis 20lb Dacron® backing and Orvis Wonderline a standard weight forward floating fly line. Alternate capacities are based on *30lb Orvis Dacron backing.